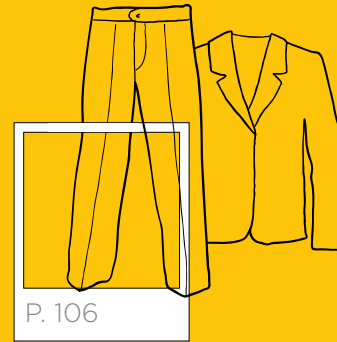


CIRRI COLLECTION
UNIFORM

L'eleganza è servita

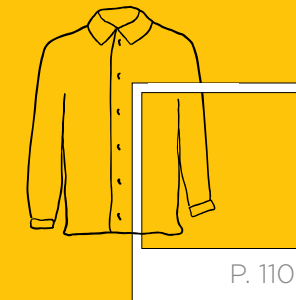


Elegance is served



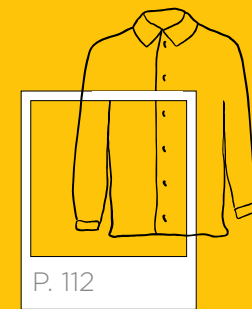
ABITO
Suit

P. 106



CAMICIA UOMO
Man shirt

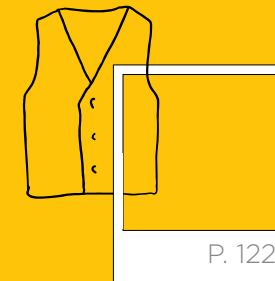
P. 110



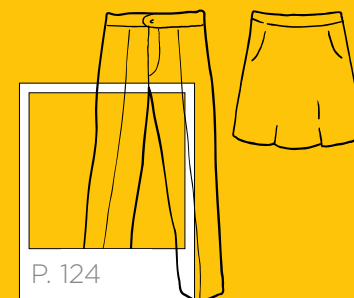
CAMICIA DONNA
Woman blouse

P. 112

GILET
Vest



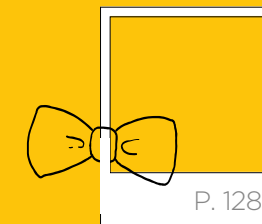
P. 122



PANTALONI E GIONNE
Trousers and skirts

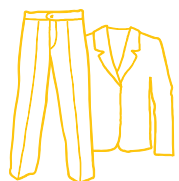
P. 124

ACCESSORI
Accessories



P. 128

CIRRI COLLECTION
RECEPTION-SALA - SIGGI



HORECA
RECEPTION E SALA
HALLS AND ATTENDANTS

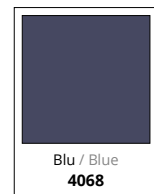
BARRY

ART. 28PA0897/01

Pantaloni Uomo / Man Trousers

Tessuto / Fabric
90% Poliestere / Polyester
10% Viscosa / Viscose
175 gr/m²

Taglie / Sizes
42 - 60



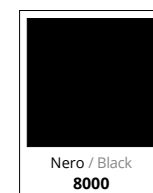
DYLAN

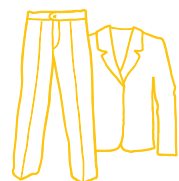
ART. 28GA0184/01

Giacca Uomo / Man Jacket

Tessuto / Fabric
90% Poliestere / Polyester
10% Viscosa / Viscose
175 gr/m²

Taglie / Sizes
42 - 60





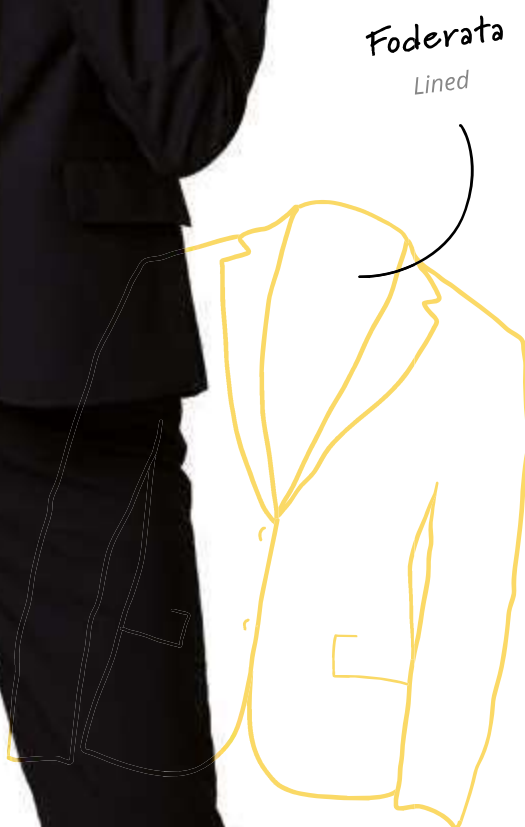
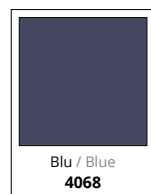
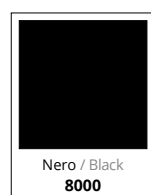
HORECA
RECEPTION E SALA
HALLS AND ATTENDANTS

ALEXA
ART. 28GA0185/01

Giacca Donna / Woman Jacket

Tessuto / Fabric
90% Poliestere / Polyester
10% Viscosa / Viscose
175 gr/m²

Taglie / Sizes
40 - 54

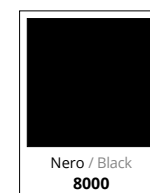


ALISSA
ART. 28PA0898/01

Pantaloni Donna / Woman Trousers

Tessuto / Fabric
90% Poliestere / Polyester
10% Viscosa / Viscose
175 gr/m²

Taglie / Sizes
40 - 54

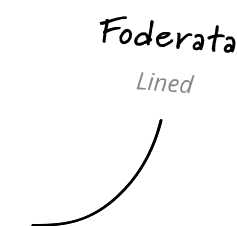
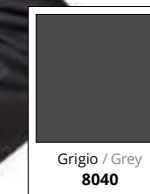


STELLA
ART. 28GO0052

Gonna / Skirt

Tessuto / Fabric
90% Poliestere / Polyester
10% Viscosa / Viscose
175 gr/m²

Taglie / Sizes
40 - 54





HORECA
RECEPTION E SALA
HALLS AND ATTENDANTS

OEKO-TEX®
CONFIDENCE IN TEXTILES
STANDARD 100
21CX00066 CENTROCOT
Testato per sostanze nocive.
www.oeko-tex.com/standard100

Collo alla
coreana
Korean neck



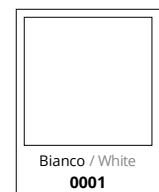
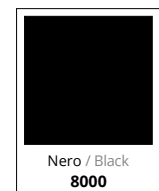
EVAN
ART. 28CM0275
Camicia Uomo / Man Shirt

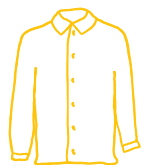
Tessuto / Fabric
97% Cotone / Cotton
3% Elastan
130 gr/m²

Taglie / Sizes
S - 3XL



Tessuto
elasticizzato
Stretch fabric





HORECA
RECEPTION E SALA
HALLS AND ATTENDANTS

OEKO-TEX®
CONFIDENCE IN TEXTILES
STANDARD 100
21CX00066 CENTROCOT
Testato per sostanze nocive.
www.oeko-tex.com/standard100

Collo alla
coreana
Korean neck



RUBINA
ART. 28CM0281

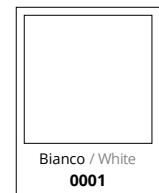
Camicia Donna / Woman Shirt

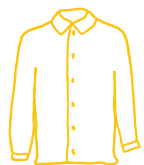
Tessuto / Fabric
97% Cotone / Cotton
3% Elastan
130 gr/m²

Taglie / Sizes
XS - 3XL



Tessuto
elasticizzato
Stretch fabric





HORECA
RECEPTION E SALA
HALLS AND ATTENDANTS

OEKO-TEX®
CONFIDENCE IN TEXTILES
STANDARD 100
21CX00066 CENTROCOT
Testato per sostanze nocive.
www.oeko-tex.com/standard100

JAMES
ART. 28CM0256

Camicia Uomo / Man Shirt

Tessuto / Fabric
97% Cotone / Cotton
3% Elastan
130 gr/m²

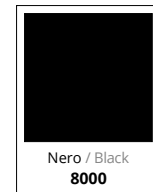
Taglie / Sizes
S - 3XL



Azzurro / Azure
5071



Bianco / White
0001



Nero / Black
8000

Tessuto
elasticizzato
Stretch fabric





HORECA
RECEPTION E SALA
HALLS AND ATTENDANTS

OEKO-TEX®
CONFIDENCE IN TEXTILES
STANDARD 100
21CX00066 CENTROCOT
Testato per sostanze nocive.
www.oeko-tex.com/standard100

LISA
ART. 28CM0164

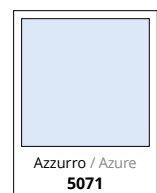
Camicia Donna / Woman Shirt

Tessuto / Fabric
97% Cotone / Cotton
3% Elastan
130 gr/m²

Taglie / Sizes
XS - 3XL



Tessuto
elasticizzato
Stretch fabric



Azzurro / Azure
5071



Bianco / White
0001



Nero / Black
8000





HORECA
RECEPTION E SALA
HALLS AND ATTENDANTS

OEKO-TEX®
CONFIDENCE IN TEXTILES
STANDARD 100
21CX00066 CENTROCOT
Testato per sostanze nocive.
www.oeko-tex.com/standard100

MASSIMO
ART. 28CM0161/00-9000
Camicia Uomo / Man Shirt

Tessuto / Fabric
100% Cotone / Cotton
120 gr/m²

Taglie / Sizes
S - 3XL



MASSIMO
ART. 28CM0161/00-9020
Camicia Uomo / Man Shirt

Tessuto / Fabric
35% Cotone / Cotton
65% Poliestere / Polyester
130 gr/m²

Taglie / Sizes
XS - 3XL



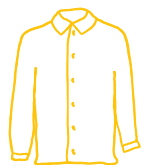
Taschino petto
sinistro
Breast pocket



Popeline irrestringibile
Unshrinkable

Taschino petto
sinistro
Breast pocket

Irrestringibile
Unshrinkable



HORECA
RECEPTION E SALA
HALLS AND ATTENDANTS

OEKO-TEX®
CONFIDENCE IN TEXTILES
STANDARD 100
21CX00066 CENTROCOT
Testato per sostanze nocive.
www.oeko-tex.com/standard100

MARTA
ART. 28CM0163
Camicia Donna / Woman Shirt

Tessuto / Fabric
100% Cotone / Cotton
120 gr/m²

Taglie / Sizes
XS - 3XL



Popeline
irrestringibile
Unshrinkable popeline

BARBARA
ART. 28CM0165
Camicia Donna / Woman Shirt

Tessuto / Fabric
97% Cotone / Cotton
3% Elastan
130 gr/m²

Taglie / Sizes
S - XXL

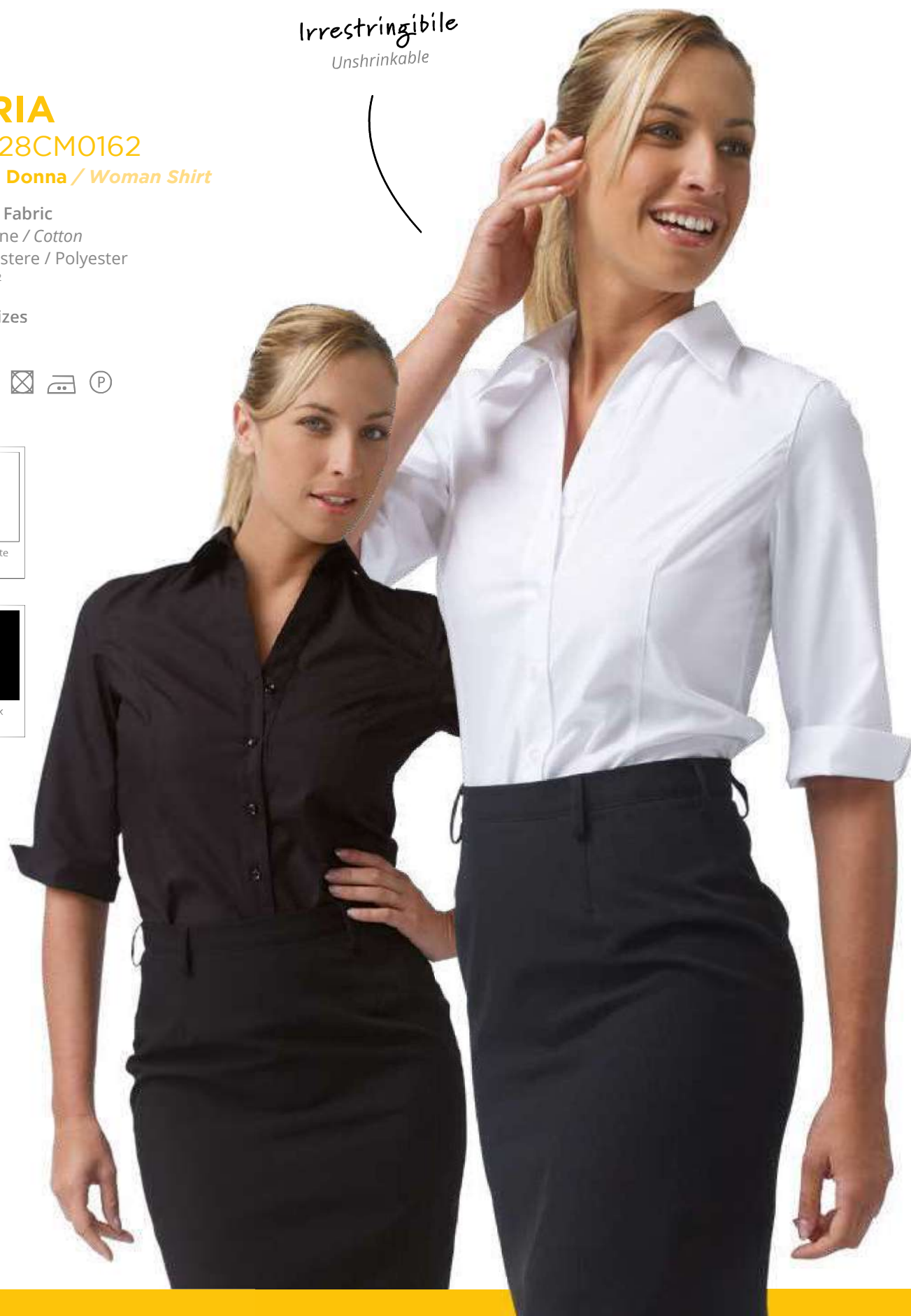
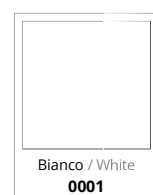


Tessuto
elasticizzato
Stretch fabric

MARIA
ART. 28CM0162
Camicia Donna / Woman Shirt

Tessuto / Fabric
35% Cotone / Cotton
65% Poliestere / Polyester
130 gr/m²

Taglie / Sizes
S - 3XL





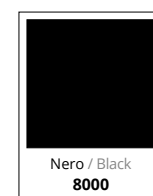
HORECA
RECEPTION E SALA
HALLS AND ATTENDANTS

OEKO-TEX®
CONFIDENCE IN TEXTILES
STANDARD 100
21CX00066 CENTROCOT
Testato per sostanze nocive.
www.oeko-tex.com/standard100

MIRELLA
ART. 28GT0012
Gilet Donna / Woman Vest

Tessuto / Fabric
100% Poliestere / Polyester
200 gr/m²

Taglie / Sizes
S - XXL



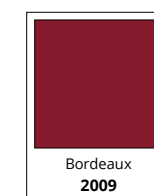
Antimacchia e
ingualcibile
Stain resistant,
crease resistant

MARION
ART. 28GT0089

Gilet Donna Lungo / Woman Long Vest

Tessuto / Fabric
100% Poliestere / Polyester
200 gr/m²

Taglie / Sizes
S - XXL



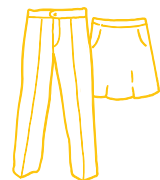
Antimacchia e
ingualcibile
Stain resistant,
crease resistant

STEFANO
ART. 28GT0010
Gilet Uomo / Man Vest

Tessuto / Fabric
100% Poliestere / Polyester
200 gr/m²

Taglie / Sizes
S - XXL





HORECA
RECEPTION E SALA
HALLS AND ATTENDANTS

OEKO-TEX®
CONFIDENCE IN TEXTILES
STANDARD 100
21CX00066 CENTROCOT
Testato per sostanze nocive.
www.oeko-tex.com/standard100

EDOARDO
ART. 28PA0206

Pantaloni Uomo / Man Trousers

Tessuto / Fabric
100% Poliestere / Polyester
180 gr/m²

Taglie / Sizes
40 - 60



Ampia
gamma taglie
Wide size range



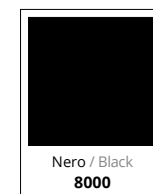
Antimacchia
e ingualcibile
Stain resistant,
crease resistant

PAOLA
ART. 28PA0054

Pantaloni Donna / Woman Trousers

Tessuto / Fabric
100% Poliestere / Polyester
180 gr/m²

Taglie / Sizes
38 - 56



Vita alta
High waist

Antimacchia
e ingualcibile
Stain resistant,
crease resistant

SUSANNE
ART. 28PA0788

Pantaloni Donna / Woman Trousers

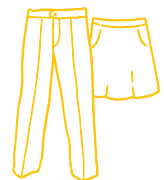
Tessuto / Fabric
100% Poliestere / Polyester
180 gr/m²

Taglie / Sizes
38 - 56



Vita bassa
Low waist

→ **JAMES**
ART. 28CM0256
Camicia Uomo
Man Shirt
P. 114



HORECA
RECEPTION E SALA
HALLS AND ATTENDANTS

OEKO-TEX®
CONFIDENCE IN TEXTILES
STANDARD 100
21CX00066 CENTROCOT
Testato per sostanze nocive.
www.oeko-tex.com/standard100

PAMELA
ART. 18GO0055

Gonna / Skirt

Tessuto / Fabric
55% Cotone / Cotton
42% Poliestere / Polyester
3% Elastan
160 gr/m²

Taglie / Sizes
38 - 60



Grigio / Grey
8057

PATRIZIA
ART. 18PA1160

Pantaloni Donna / Woman Trousers

Tessuto / Fabric
55% Cotone / Cotton
42% Poliestere / Polyester
3% Elastan
160 gr/m²

Taglie / Sizes
38 - 60



Grigio / Grey
8057

Ampia
gamma taglie
Wide size range

Tessuto
elasticizzato
Stretch fabric

Tessuto
elasticizzato
Stretch fabric





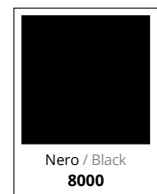
HORECA
RECEPTION E SALA
HALLS AND ATTENDANTS

OEKO-TEX®
CONFIDENCE IN TEXTILES
STANDARD 100
21CX00066 CENTROCOT
Testato per sostanze nocive.
www.oeko-tex.com/standard100

JODY
ART. 28BE0204
Berretto / Cap

Tessuto / Fabric
100% Poliestere / Polyester
150 gr/m²

Taglie / Sizes
UNICA / ONE SIZE

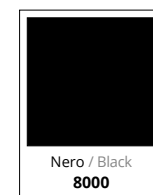
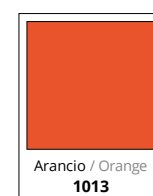


→ DEVON
→ FRANKIE
Grembiule
Apron
P. 171 - 152

KYLE
ART. 28BE0205
Berretto / Cap

Tessuto / Fabric
35% Cotone / Cotton
65% Poliestere / Polyester
195 gr/m²

Taglie / Sizes
UNICA / ONE SIZE



→ ASH
→ EDDIE
→ BOBBY
→ KIT
Grembiule
Apron
P. 142 - 168 - 169





HORECA
RECEPTION E SALA
HALLS AND ATTENDANTS

OEKO-TEX®
CONFIDENCE IN TEXTILES
STANDARD 100
21CX00066 CENTROCOT
Testato per sostanze nocive.
www.oeko-tex.com/standard100

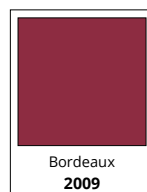
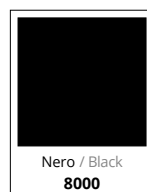
HOLLY

ART. 28BE0156/00-0111

Berretto / Cap

Tessuto / Fabric
100% Poliestere / Polyester
200 gr/m²

Taglie / Sizes
UNICA / ONE SIZE



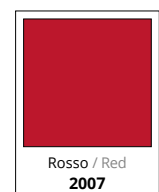
HOLLY e

ART. 28BE0156/00-0819

Berretto / Cap

Tessuto / Fabric
35% Cotone / Cotton
65% Poliestere / Polyester
195 gr/m²

Taglie / Sizes
UNICA / ONE SIZE



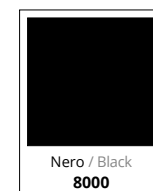
GEORGE

ART. 28CV0001

Papillon / Bow Tie

Tessuto / Fabric
100% Poliestere / Polyester
200 gr/m²

Taglie / Sizes
UNICA / ONE SIZE





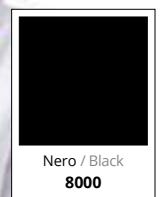
HORECA
RECEPTION E SALA
HALLS AND ATTENDANTS

GINNY
ART. 28CV0017

Cravattino Unisex / Unisex Necktie

Tessuto / Fabric
100% Poliestere / Polyester
200 gr/m²

Taglie / Sizes
UNICA / ONE SIZE



ALVIN
ART. 28CV0018

Cravatta / Tie

Tessuto / Fabric
90% Poliestere / Polyester
10% Viscosa / Viscose
175 gr/m²

Taglie / Sizes
UNICA / ONE SIZE

