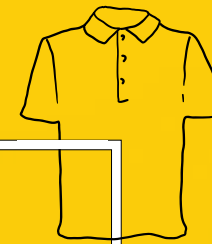
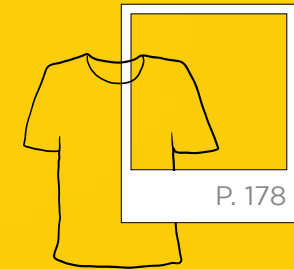


CIRRI COLLECTION
UNIFORM



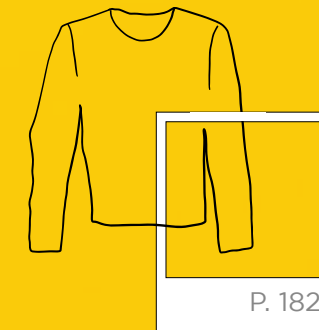
T-SHIRT



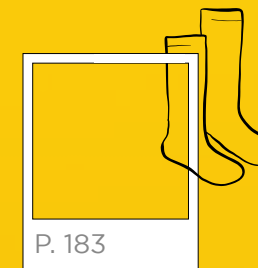
P. 180

POLO
Polo Shirts

UNDERWEAR



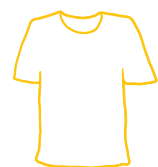
P. 182



P. 183

SOCKS
Calze

CIRRI COLLECTION
MAGLIERIA - SIGGI

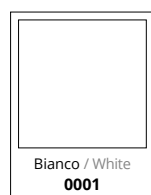


HORECA
MAGLIERIA E UNDERWEAR
T-SHIRTS, POLOS AND UNDERWEAR

PARIS
ART. 20MA0003
T-shirt

Tessuto / Fabric
100% Cotone mercerizzato
Mercerized cotton
140 gr/m²

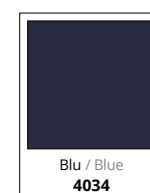
Taglie / Sizes
S - 3XL



ISCHIA
ART. 20MA0004
T-shirt

Tessuto / Fabric
100% Cotone / Cotton
125 gr/m²

Taglie / Sizes
S - 2XL





HORECA
MAGLIERIA E UNDERWEAR
T-SHIRTS, POLOS AND UNDERWEAR

OEKO-TEX®
CONFIDENCE IN TEXTILES
STANDARD 100
21CX00066 CENTROCOT
Testato per sostanze nocive.
www.oeko-tex.com/standard100

SUMMER
ART. 20MA0001
Polo MC / Polo shirt SS

Tessuto / Fabric
100% Cotone piquet / Piquet
cotton
180 gr/m²

Taglie / Sizes
XS - 4XL



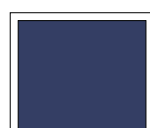
SUMMER
ART. 20MA0253
Polo ML / Polo shirt LS

Tessuto / Fabric
100% Cotone piquet / Piquet
cotton
180 gr/m²

Taglie / Sizes
XS - 4XL



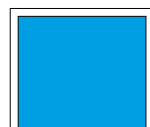
Bianco / White
0001



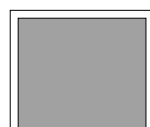
Blu / Blue
4034



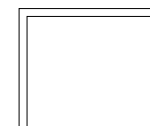
Nero / Black
8000



Bluette / Light blue
5020



Grigio / Grey
8009



Bianco / White
0001



Arancione / Orange
1003



Blu / Blue
4034



Verde / Green
6031



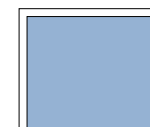
Nero / Black
8000



Rosso / Red
2000



Bluette / Light blue
5020

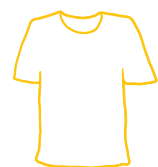


Azzurro / Azure
5043



Grigio / Grey
8009





HORECA
MAGLIERIA E UNDERWEAR
T-SHIRTS, POLOS AND UNDERWEAR

T-SHIRT

ART. 19MA0251

T-shirt estiva / Summer t-shirt

Tessuto / Fabric
95% Polipropilene cavo / Hollow polypropylene
5% Elastan
80 gr/m²

Taglie / Sizes
S - 2XL



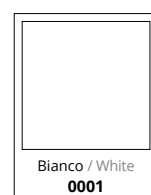
T-SHIRT

ART. 19MA0249

T-shirt invernale / Winter t-shirt

Tessuto / Fabric
100% Polipropilene cavo / Hollow polypropylene
135 gr/m²

Taglie / Sizes
S - 2XL



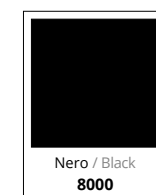
T-SHIRT

ART. 19MA0250

T-shirt invernale ML / Winter LS t-shirt

Tessuto / Fabric
100% Polipropilene cavo / Hollow polypropylene
135 gr/m²

Taglie / Sizes
S - 2XL



CALZA

ART. 19CZ0002

Calza invernale / Winter socks

Tessuto / Fabric
30% Viscosa / Viscose
60% Polipropilene / Polypropylene
5% Poliammide / Polycarbonate
5% Elastan

Taglie / Sizes
35/37
38/40
41/43
44/46



CALZAMAGLIA

ART. 19CZ0063

Calzamazaglia invernale / Winter tights

Tessuto / Fabric
100% Polipropilene cavo / Hollow polypropylene
135 gr/m²

Taglie / Sizes
S - 2XL

