



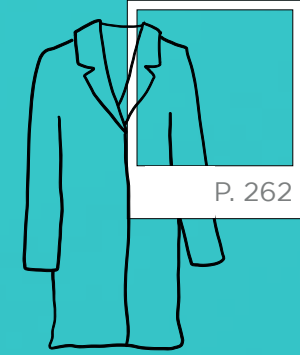
CIRRI COLLECTION  
UNIFORM

*Cura e attenzione vestono uno stile libero*

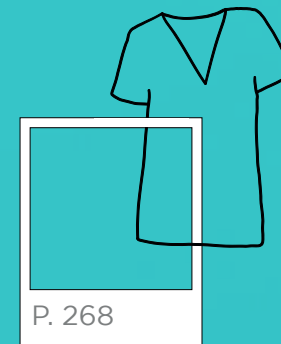
*Care and attention wear a free style*



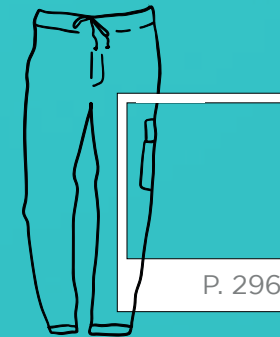
CAMICI  
Coats



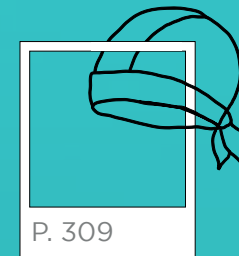
CASACCHE  
Tunics



PANTALONI  
Trousers



ACCESSORI  
Accessories



CIRRI COLLECTION  
**MEDICAL** - SIGGI



**DR.BLUE**  
CAMICE  
COAT

OEKO-TEX®  
CONFIDENCE IN TEXTILES  
**STANDARD 100**  
21CX00066 CENTROCOT  
Testato per sostanze nocive.  
www.oeko-tex.com/standard100

**BLUMMER**  
ART. 04CA0236  
Camice / Coat

Tessuto / Fabric  
100% Cotone / Cotton  
Gabardine 190 gr/m<sup>2</sup>

Taglie / Sizes  
44 - 60



**CLUSTER**  
ART. 04CA0237  
Camice / Coat

Tessuto / Fabric  
100% Cotone (doppio ritorto)  
Cotton (twine thickness)  
Gabardine 210 gr/m<sup>2</sup>

Taglie / Sizes  
44 - 60



**DUKE**  
ART. 04CA0175  
Camice / Coat

Tessuto / Fabric  
100% Cotone (doppio ritorto)  
Cotton (twine thickness)  
Garbadine 170 gr/m<sup>2</sup>

Taglie / Sizes  
44 - 60



Camice con soffiato su schiena e tasche; martingala posteriore  
Coat with folding on the back and pockets; back half-belt



Camici classici con martingala posteriore  
Classic coats with back half-belt

Doppiopetto  
Double breasted





**DR.BLUE**  
CAMICE  
COAT

OEKO-TEX®  
CONFIDENCE IN TEXTILES  
**STANDARD 100**  
21CX00066 CENTROCOT  
Testato per sostanze nocive.  
www.oeko-tex.com/standard100

**MARIS**  
ART. 04CA0512  
Camice / Coat

Tessuto / Fabric  
55% Cotone / Cotton  
42% Poliestere / Polyester  
3% Elastan  
160 gr/m<sup>2</sup>

Taglie / Sizes  
38 - 56



**DRIMMER**  
ART. 04CA0171  
Camice / Coat

Tessuto / Fabric  
100% Cotone (doppio ritorto)  
Cotton (twine thickness)  
Garbadine 170 gr/m<sup>2</sup>

Taglie / Sizes  
38 - 56



Camice classico con martingala  
posteriore / Classic coat with back  
side half-belt



Chiusura con  
bottoni a pressione  
Snap buttons closure

Tessuto  
elasticizzato  
Stretch fabric



**DR.BLUE**  
CAMICE  
COAT

OEKO-TEX®  
CONFIDENCE IN TEXTILES  
**STANDARD 100**  
21CX00066 CENTROCOT  
Testato per sostanze nocive.  
www.oeko-tex.com/standard100

**ONER**  
ART. 04CA0238  
Camice / Coat

Tessuto / Fabric  
100% Cotone / Cotton  
Garbadine 190 gr/m²

Taglie / Sizes  
38 - 56



**REYNARD**  
ART. 04CA0173  
Camice / Coat

Tessuto / Fabric  
100% Cotone (doppio ritorto)  
Cotton (twine thickness)  
Garbadine 170 gr/m²

Taglie / Sizes  
38 - 56



Camice sfiancato lunghezza  $\frac{3}{4}$   
Easy fitting coat length  $\frac{3}{4}$



Camice classico  
con martingala  
posteriore  
Classic coat with back side  
half-belt





**DR.BLUE**  
CASACCA  
TUNIC

OEKO-TEX®  
CONFIDENCE IN TEXTILES  
**STANDARD 100**  
21CX00066 CENTROCOT  
Testato per sostanze nocive.  
www.oeko-tex.com/standard100

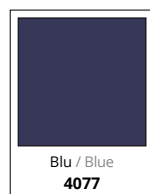
**LIAM**  
ART. 04CS1692  
Casacca Unisex / Unisex Tunic

Tessuto / Fabric  
55% Cotone / Cotton  
42% Poliestere / Polyester  
3% Elastan  
160 gr/m²

Taglie / Sizes  
XXS - 3XL



Bianco / White  
0001



Blu / Blue  
4077



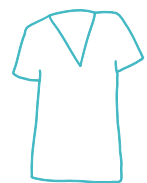
Grigio / Grey  
8057

Tessuto  
elasticizzato  
Stretch fabric



Taschino doppio con dettaglio ricamo / Double breast pocket with embroidery detail

→ **CRUZ**  
ART. 04PA1393  
Pantaloni unisex  
Unisex trousers  
P. 300



**DR.BLUE**  
CASACCA  
TUNIC

OEKO-TEX®  
CONFIDENCE IN TEXTILES  
**STANDARD 100**  
21CX00066 CENTROCOT  
Testato per sostanze nocive.  
www.oeko-tex.com/standard100

**JULIAN**  
ART. 04CS1533  
Casacca Uomo / Man Tunic

Tessuto / Fabric  
55% Cotone / Cotton  
42% Poliestere / Polyester  
3% Elastan  
160 gr/m²

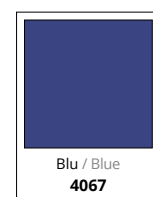
Taglie / Sizes  
44 - 60



**NOLAN**  
ART. 04CS1343/00-0761  
Casacca Uomo / Man Tunic

Tessuto / Fabric  
96% Cotone / Cotton  
4% Elastan  
130 gr/m²

Taglie / Sizes  
44 - 60



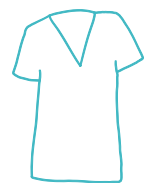
**NOLAN**  
ART. 04CS1343/00-0757  
Casacca Uomo / Man Tunic

Tessuto / Fabric  
55% Cotone / Cotton  
42% Poliestere / Polyester  
3% Elastan  
160 gr/m²

Taglie / Sizes  
44 - 60







**DR.BLUE**  
CASACCA  
TUNIC

OEKO-TEX®  
CONFIDENCE IN TEXTILES  
**STANDARD 100**  
21CX00066 CENTROCOT  
Testato per sostanze nocive.  
www.oeko-tex.com/standard100



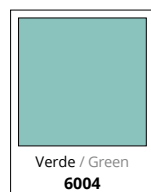
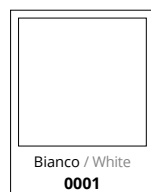
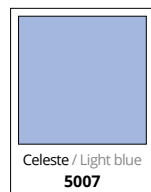
Casacca con apertura laterale  
Tunic with lateral opening

Apertura con bottoni  
a pressione e zip nella  
parte inferiore  
Snap buttons opening and zip  
on the lower part

**JASON**  
ART. 04CS0802  
Casacca Uomo / Man Tunic

Tessuto / Fabric  
100% Cotone / Cotton  
Gabardine 190 gr/m<sup>2</sup>

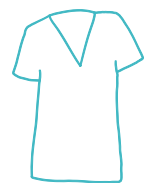
Taglie / Sizes  
44 - 60



Collo, polsino e  
spalla in costina  
elasticizzata  
Stretch fabric on neck, cuffs  
and shoulders







**DR.BLUE**  
CASACCA  
TUNIC

OEKO-TEX®  
CONFIDENCE IN TEXTILES  
**STANDARD 100**  
21CX00066 CENTROCOT  
Testato per sostanze nocive.  
www.oeko-tex.com/standard100

**KATE**  
ART. 04CS1689

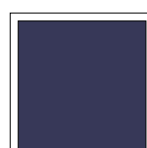
Casacca Donna / Woman Tunic

Tessuto / Fabric  
55% Cotone / Cotton  
42% Poliestere / Polyester  
3% Elastan  
160 gr/m²

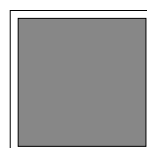
Taglie / Sizes  
XS - 3XL



Bianco / White  
0001



Blu / Blue  
4077



Grigio / Grey  
8057



Chiusura con zip e bottone a pressione sul collo / Zip closure and snap button on the neck



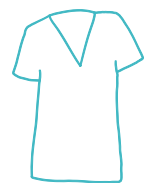
Tasca con fettuccia interna / Pocket with tape inside



→ **CRUZ**  
ART. 04PA1393  
Pantaloni unisex  
Unisex trousers  
P. 300

**DR.BLUE**  
CASACCA / TUNIC





**DR.BLUE**  
CASACCA  
TUNIC

OEKO-TEX®  
CONFIDENCE IN TEXTILES  
**STANDARD 100**  
21CX00066 CENTROCOT  
Testato per sostanze nocive.  
www.oeko-tex.com/standard100



Chiusura con bottoni a pressione  
Snap buttons closure



Tasche con zip rovesciata  
Reversed zip on the pockets

**VIVIAN**  
ART. 04CS1691

Casacca Donna / Woman Tunic

Tessuto / Fabric

55% Cotone / Cotton  
42% Poliestere / Polyester  
3% Elastan  
160 gr/m<sup>2</sup>

Taglie / Sizes

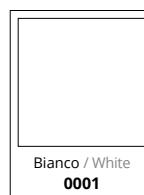
XS - 3XL



Blu / Blue  
4077



Grigio / Grey  
8057

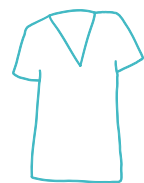


Bianco / White  
0001



→ **CRUZ**  
ART. 04PA1393  
Pantaloni unisex  
Unisex trousers  
P. 300

**DR.BLUE**  
CASACCA / TUNIC



**DR.BLUE**  
CASACCA  
TUNIC

OEKO-TEX®  
CONFIDENCE IN TEXTILES  
**STANDARD 100**  
21CX00066 CENTROCOT  
Testato per sostanze nocive.  
www.oeko-tex.com/standard100

**ELLIE**  
ART. 04CS1690

Casacca Donna / Woman Tunic

Tessuto / Fabric  
100% Cotone / Cotton  
Gabardine 190 gr/m<sup>2</sup>

Taglie / Sizes  
XS - 3XL



→ **STAR**  
ART. 04PA0441  
Pantaloni  
Trousers  
P. 296



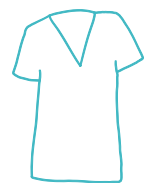
Fettuccia  
portapenne su  
taschino  
Pen holder tape



→ **SKY**  
ART. 04PA0379  
Pantaloni Donna  
Woman Trousers  
P. 305

**DR.BLUE**  
CASACCA / TUNIC





**DR.BLUE**  
CASACCA  
TUNIC

**NATALIE** <sup>e</sup>  
ART. 04CS1532

Casacca Donna / Woman Tunic

Tessuto / Fabric

57% Modal  
37% Poliestere / Polyester  
6% Elastan  
160 gr/m<sup>2</sup>

Taglie / Sizes

38 - 56



Ottanio / Teal green  
6097



Spacchi  
laterali chiusi  
con bottoni a  
pressione

Lateral vents with  
snap buttons

**LEAH** <sup>e</sup>  
ART. 04CS1531

Casacca Donna / Woman Tunic

Tessuto / Fabric

57% Modal  
37% Poliestere / Polyester  
6% Elastan  
160 gr/m<sup>2</sup>

Taglie / Sizes

38 - 56



Bianco naturale  
Natural white  
0006



→ **STAN**  
ART. 04PA1119  
Pantaloni  
Trousers  
P. 298





**DR.BLUE**  
CASACCA  
TUNIC

**JASMINE** <sup>e</sup>

ART. 04CS1530

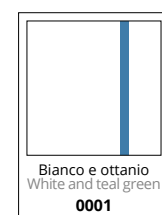
Casacca Donna / Woman Tunic

Tessuto / Fabric

55% Cotone / Cotton  
42% Poliestere / Polyester  
3% Elastan  
160 gr/m<sup>2</sup>

Taglie / Sizes

38 - 56



Bianco e ottanio  
White and teal green  
0001



Chiusura con  
bottoni a pressione  
Snap button closure

**QUEEN** <sup>e</sup>

ART. 04CS1409/00-0761

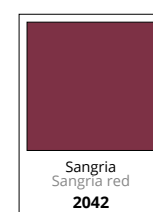
Casacca Donna / Woman Tunic

Tessuto / Fabric

96% Cotone / Cotton  
4% Elastan  
130 gr/m<sup>2</sup>

Taglie / Sizes

38 - 56



Sangria  
Sangria red  
2042



Verde salvia  
Sage green  
6088



Fascia in vita  
chiusa con  
bottoni a pressione  
Waist closure with snap  
buttons



**QUEEN** <sup>e</sup>

ART. 04CS1409/00-0757

Casacca Donna / Woman Tunic

Tessuto / Fabric

55% Cotone / Cotton  
42% Poliestere / Polyester  
3% Elastan  
160 gr/m<sup>2</sup>

Taglie / Sizes

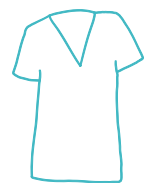
38 - 56



Bianco / White  
0001







**DR.BLUE**  
CASACCA  
TUNIC

OEKO-TEX®  
CONFIDENCE IN TEXTILES  
**STANDARD 100**  
21CX00066 CENTROCOT  
Testato per sostanze nocive.  
www.oeko-tex.com/standard100

**CHERRY**  
ART. 04CS1339/00-0757  
Casacca Donna / Woman Tunic

Tessuto / Fabric  
55% Cotone / Cotton  
42% Poliestere / Polyester  
3% Elastan  
160 gr/m<sup>2</sup>

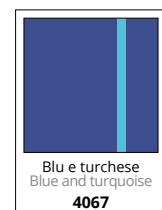
Taglie / Sizes  
38 - 56



**CHERRY**  
ART. 04CS1339/00-0761  
Casacca Donna / Woman Tunic

Tessuto / Fabric  
96% Cotone / Cotton  
4% Elastan  
130 gr/m<sup>2</sup>

Taglie / Sizes  
38 - 56



Chiusura  
nascosta con zip  
Hidden zip closure

Chiusura  
nascosta con zip  
Hidden zip closure



Cintura sul retro  
Back belt

→ **TAMARA**  
ART. 04PA0997/00-0761  
Pantaloni Donna  
Woman Trousers  
P. 303





**DR.BLUE**  
CASACCA  
TUNIC

OEKO-TEX®  
CONFIDENCE IN TEXTILES  
**STANDARD 100**  
21CX00066 CENTROCOT  
Testato per sostanze nocive.  
www.oeko-tex.com/standard100

**TRUDY** e  
ART. 04CS1340/00-0761  
Casacca Donna / Woman Tunic

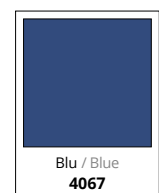
**TRUDY**  
ART. 04CS1340/00-0757  
Casacca Donna / Woman Tunic

**TRACY**  
ART. 04CS1352/00-0761  
Casacca Donna / Woman Tunic

**TRACY**  
ART. 04CS1352/00-0757  
Casacca Donna / Woman Tunic

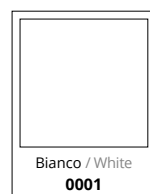
Tessuto / Fabric  
96% Cotone / Cotton  
4% Elastan  
130 gr/m²

Taglie / Sizes  
38 - 56



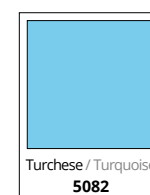
Tessuto / Fabric  
55% Cotone / Cotton  
42% Poliestere / Polyester  
3% Elastan  
160 gr/m²

Taglie / Sizes  
38 - 56



Tessuto / Fabric  
96% Cotone / Cotton  
4% Elastan  
130 gr/m²

Taglie / Sizes  
38 - 56

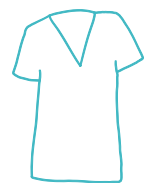


Tessuto / Fabric  
55% Cotone / Cotton  
42% Poliestere / Polyester  
3% Elastan  
160 gr/m²

Taglie / Sizes  
38 - 56







**DR.BLUE**  
CASACCA  
TUNIC

OEKO-TEX®  
CONFIDENCE IN TEXTILES  
**STANDARD 100**  
21CX00066 CENTROCOT  
Testato per sostanze nocive.  
www.oeko-tex.com/standard100

**ROSES**  
ART. 04CS0311

Casacca Donna / Woman Tunic

Tessuto / Fabric  
100% Cotone / Cotton  
Gabardine 190 gr/m<sup>2</sup>

Taglie / Sizes  
38 - 56



Casacca con costina laterale elasticizzata / Tunic with stretch band on the side

**MATILDA**  
ART. 04CS1049

Casacca Donna / Woman Tunic

Tessuto / Fabric  
100% Cotone / Cotton  
Gabardine 190 gr/m<sup>2</sup>

Taglie / Sizes  
38 - 56



Chiusura nascosta con zip  
Hidden zip closure



Chiusura nascosta con bottoni e occhielli  
Hidden buttons closure

**GWEN**  
ART. 04CS1188

Casacca Donna / Woman Tunic

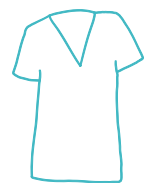
Tessuto / Fabric  
60% Cotone / Cotton  
40% Poliestere / Polyester  
200gr/m<sup>2</sup>

Taglie / Sizes  
38 - 56



← **JUDY**  
ART. 04PA0909  
Pantaloni Donna  
Woman Trousers  
P. 308





**DR.BLUE**  
CASACCA  
TUNIC

OEKO-TEX®  
CONFIDENCE IN TEXTILES  
**STANDARD 100**  
21CX00066 CENTROCOT  
Testato per sostanze nocive.  
www.oeko-tex.com/standard100

**MILLY**  
ART. 04CS0809  
Casacca Donna / Woman Tunic

Tessuto / Fabric  
100% Cotone / Cotton  
Gabardine 190 gr/m²

Taglie / Sizes  
38 - 56

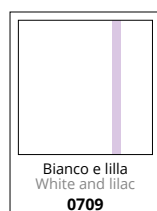


Chiusura nascosta con zip  
Hidden zip closure

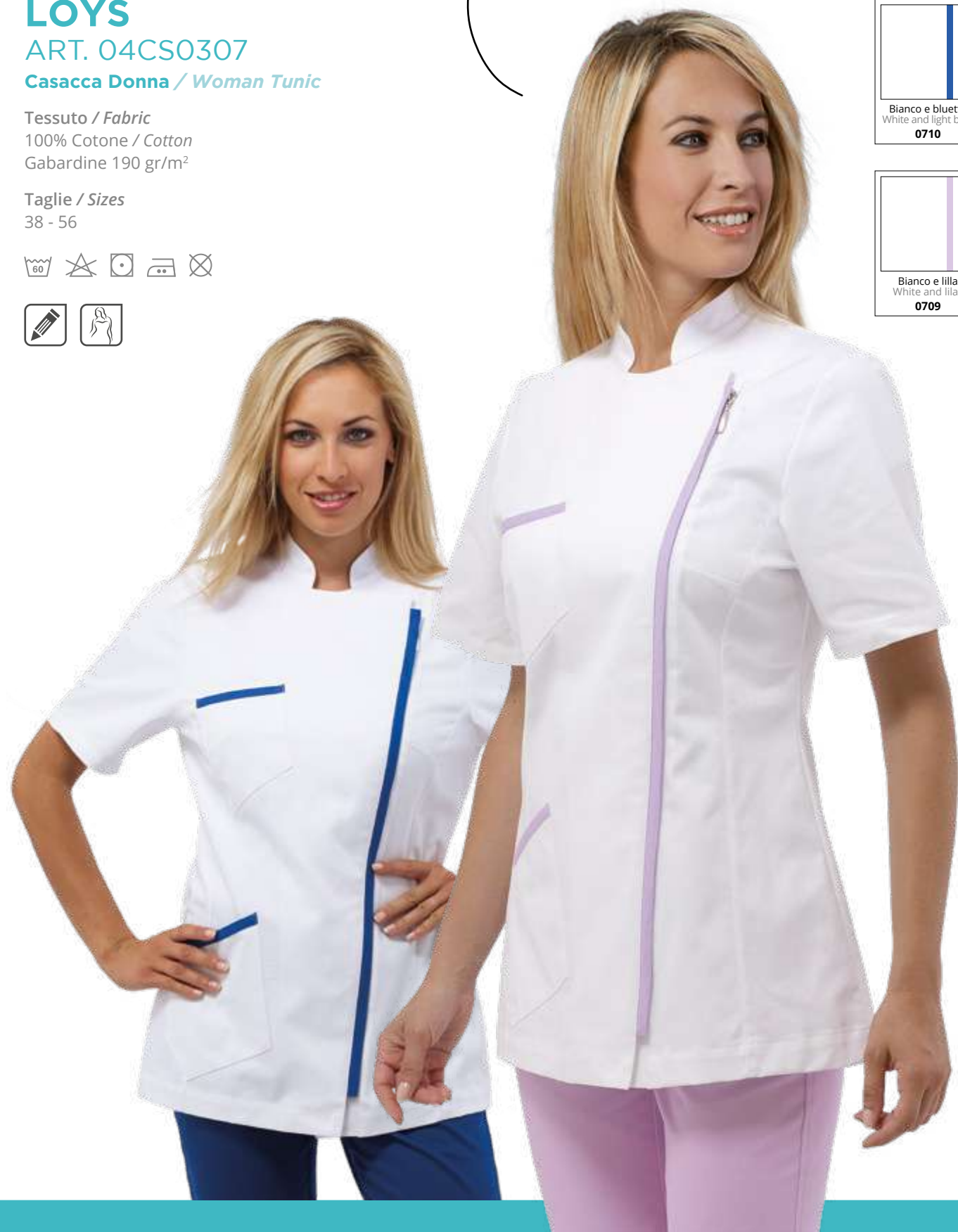
**LOYS**  
ART. 04CS0307  
Casacca Donna / Woman Tunic

Tessuto / Fabric  
100% Cotone / Cotton  
Gabardine 190 gr/m²

Taglie / Sizes  
38 - 56



Chiusura nascosta con zip  
Hidden zip closure



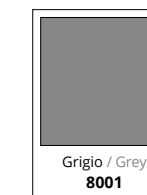
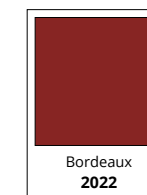
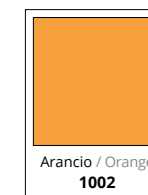




**DR.BLUE**  
CASACCA  
TUNIC

OEKO-TEX®  
CONFIDENCE IN TEXTILES  
**STANDARD 100**  
21CX00066 CENTROCOT  
Testato per sostanze nocive.  
www.oeko-tex.com/standard100

CIRRI COLLECTION UNIFORM



## SUMMER

ART. 04CS0462/00-0014

Casacca Unisex / Unisex Tunic

Tessuto / Fabric

100% Cotone drill sanfor / Drill sanfor cotton

Gabardine 190 gr/m<sup>2</sup>

Taglie / Sizes

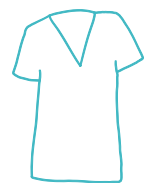
38 - 60



→ STAR  
ART. 04PA0441  
Pantaloni  
Trousers  
P. 296

**DR.BLUE**  
CASACCA / TUNIC





**DR.BLUE**  
CASACCA  
TUNIC

**SUMMER e**

ART. 04CS0462/00-0824

Casacca Unisex / Unisex Tunic

Tessuto / Fabric

35% Cotone / Cotton

65% Poliestere / Polyester

130 gr/m<sup>2</sup>

Taglie / Sizes

38 - 60



Fantasia / Pattern  
9579



**SUMMER**

ART. 04CS0462/00-0028

Casacca Unisex / Unisex Tunic

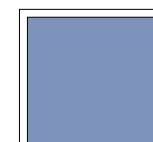
Tessuto / Fabric

100% Cotone / Cotton

Tela / Popeline 190 gr/m<sup>2</sup>

Taglie / Sizes

38 - 60



Azzurro / Azure  
5004



Verde / Green  
6000



OEKO-TEX®  
CONFIDENCE IN TEXTILES  
**STANDARD 100**  
21CX00066 CENTROCOT  
Testato per sostanze nocive.  
www.oeko-tex.com/standard100





**DR.BLUE**  
PANTALONI  
TROUSERS

OEKO-TEX®  
CONFIDENCE IN TEXTILES  
**STANDARD 100**  
21CX00066 CENTROCOT  
Testato per sostanze nocive.  
www.oeko-tex.com/standard100

**STAR**  
ART. 04PA0441/00-0028

Pantaloni / Trousers

Tessuto / Fabric  
100% Cotone / Cotton  
Tela / Popeline 190 gr/m²

Taglie / Sizes  
38 - 60



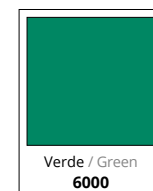
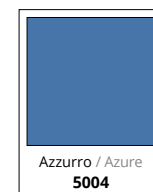
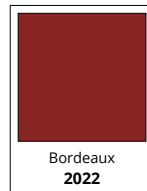
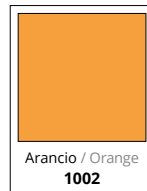
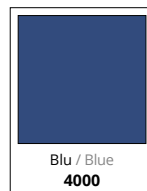
**STAR**  
ART. 04PA0441/00-0014  
Pantaloni / Trousers

Tessuto / Fabric  
100% Cotone drill sanfor / Drill sanfor cotton  
Gabardine 190 gr/m²

Taglie / Sizes  
38 - 60



→ **SUMMER**  
ART. 04CS0462  
Casacca unisex  
Unisex tunic  
P. 292





**DR.BLUE**  
PANTALONI  
TROUSERS

OEKO-TEX®  
CONFIDENCE IN TEXTILES  
**STANDARD 100**  
21CX00066 CENTROCOT  
Testato per sostanze nocive.  
www.oeko-tex.com/standard100

**STAN**  
ART. 04PA1119/00-0014  
Pantaloni unisex / Unisex trousers

Tessuto / Fabric  
100% Cotone drill sanfor / Drill sanfor cotton  
Gabardine 190 gr/m²

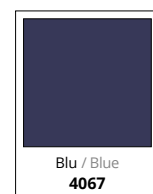
Taglie / Sizes  
38 - 60



**STAN**  
ART. 04PA1119/00-0761  
Pantaloni Unisex / Unisex Trousers

Tessuto / Fabric  
96% Cotone / Cotton  
4% Elastan  
130 gr/m²

Taglie / Sizes  
38 - 60



Elastico  
e coulisse  
in vita  
*Elastic waist  
with coulisse*



Doppia  
tasca  
laterale  
*Double pocket*

Tasche  
posteriori  
*Rear pockets*





**DR.BLUE**  
PANTALONI  
TROUSERS

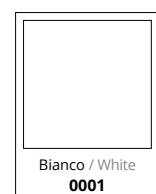
OEKO-TEX®  
CONFIDENCE IN TEXTILES  
**STANDARD 100**  
21CX00066 CENTROCOT  
Testato per sostanze nocive.  
www.oeko-tex.com/standard100

**CRUZ**  
ART. 04PA1393

**Pantaloni Unisex**  
*Unisex Trousers*

Tessuto / Fabric  
55% Cotone / Cotton  
42% Poliestere / Polyester  
3% Elastan  
160 gr/m²

Taglie / Sizes  
2XS - 3XL



*Coulisse  
in vita*  
Waist coulisse



*Vita  
elasticizzata*  
Elastic waist

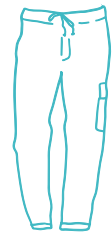
*Doppia tasca  
laterale*  
Double pocket

*Vestibilità  
unisex*  
Unisex fit



*Tasche  
posteriori*  
Rear pockets





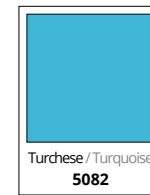
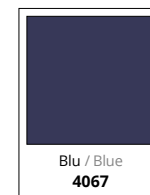
**DR.BLUE**  
PANTALONI  
TROUSERS

OEKO-TEX®  
CONFIDENCE IN TEXTILES  
**STANDARD 100**  
21CX00066 CENTROCOT  
Testato per sostanze nocive.  
www.oeko-tex.com/standard100

**TAMARA**  
ART. 04PA0997/00-0761  
Pantaloni donna / Ladies trousers

Tessuto / Fabric  
96% Cotone / Cotton  
4% Elastan  
130 gr/m<sup>2</sup>

Taglie / Sizes  
38 - 56



**TAMARA**  
ART. 04PA0997/00-0757  
Pantaloni donna / Ladies trousers

Tessuto / Fabric  
55% Cotone / Cotton  
42% Poliestere / Polyester  
3% Elastan  
160 gr/m<sup>2</sup>

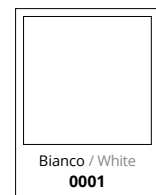
Taglie / Sizes  
38 - 56



**SUN**  
ART. 04PA0369  
Pantaloni donna / Ladies trousers

Tessuto / Fabric  
100% Cotone / Cotton  
Gabardine 190 gr/m<sup>2</sup>

Taglie / Sizes  
38 - 56



Pantaloni con costina laterale elasticizzata / Trousers with stretch band on the side



Vita elasticizzata  
Elastic waist





**DR.BLUE**  
PANTALONI  
TROUSERS

OEKO-TEX®  
CONFIDENCE IN TEXTILES  
**STANDARD 100**  
21CX00066 CENTROCOT  
Testato per sostanze nocive.  
www.oeko-tex.com/standard100

**SKY**  
ART. 04PA0379

Pantaloni Donna / Women Trousers

Tessuto / Fabric  
100% Cotone / Cotton  
Gabardine 190 gr/m<sup>2</sup>

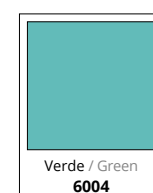
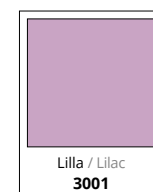
Taglie / Sizes  
38 - 56



**ALYSON**  
ART. 04PA0905/00-0014  
Pantaloni Donna / Women Trousers

Tessuto / Fabric  
100% Cotone / Cotton  
Gabardine 190 gr/m<sup>2</sup>

Taglie / Sizes  
38 - 56



Vita  
elasticizzata  
Elastic waist

Apertura  
laterale con zip  
Side zip closure





**DR.BLUE**  
PANTALONI  
TROUSERS

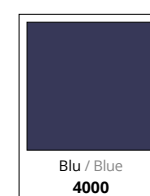
OEKO-TEX®  
CONFIDENCE IN TEXTILES  
**STANDARD 100**  
21CX00066 CENTROCOT  
Testato per sostanze nocive.  
www.oeko-tex.com/standard100

**HOPE**  
ART. 04PA0828

Pantaloni Donna / Women Trousers

Tessuto / Fabric  
95% Cotone / Cotton  
5% Elastan  
Felpa elasticizzata 260 gr/m²

Taglie / Sizes  
38 - 56

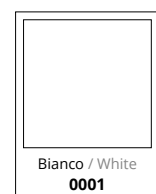


**CLOE**  
ART. 04MG0582

Cardigan Donna / Women Cardigan

Tessuto / Fabric  
95% Cotone / Cotton  
5% Elastan  
Felpa elasticizzata 260 gr/m²

Taglie / Sizes  
38 - 56



Vita elasticizzata e tasche posteriori / Elastic waist and rear pockets





**DR.BLUE**  
ACCESSORI  
ACCESSORIES

OEKO-TEX®  
CONFIDENCE IN TEXTILES  
**STANDARD 100**  
21CX00066 CENTROCOT  
Testato per sostanze nocive.  
www.oeko-tex.com/standard100

**MIRRIAL**  
ART. 04SE0059/02-0028

Bandana / Headscarf

Tessuto / Fabric  
100% Cotone / Cotton  
Tela 190gr/m²

Taglie / Sizes  
UNICA / ONE SIZE



Confezione da  
3 pezzi  
Packaging 3 pcs

**JUDY**  
ART. 04PA0909

Pantaloni Donna / Women Trousers

Tessuto / Fabric  
60% Cotone / Cotton  
40% Poliestere / Polyester  
Raso 200gr/m²

Taglie / Sizes  
38 - 56



Elastico sul retro  
Elastic on the back

